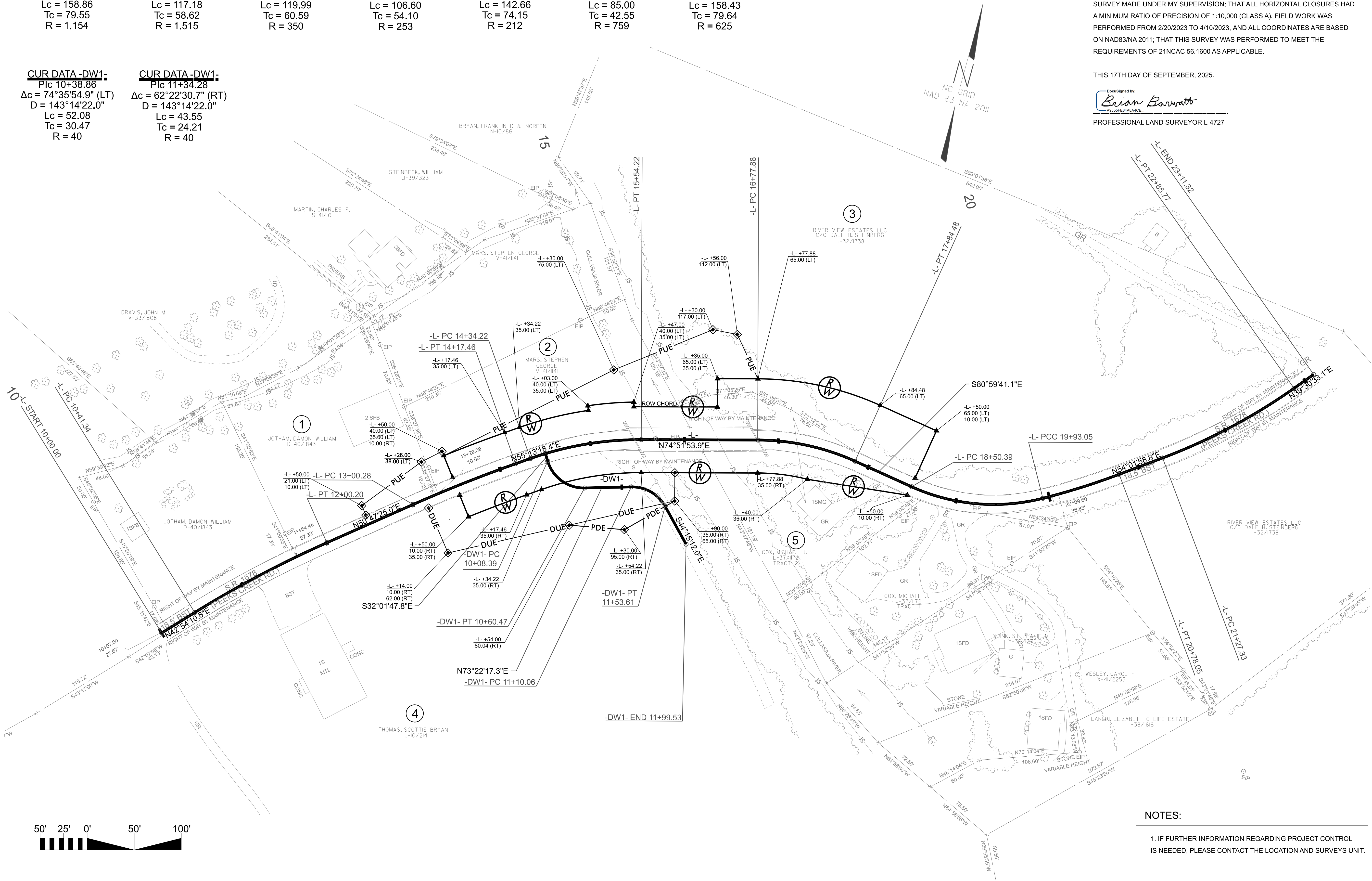


<u>CUR DATA -L-</u> Plc 11+20.89 Δc = 07°53'14.2" (RT) D = 04°57'53.9" Lc = 158.86 Tc = 79.55 R = 1,154	<u>CUR DATA -L-</u> Plc 13+58.90 Δc = 04°25'53.5" (RT) D = 03°46'54.8" Lc = 117.18 Tc = 58.62 R = 1,515	<u>CUR DATA -L-</u> Plc 14+94.81 Δc = 19°38'35.5" (RT) D = 16°22'12.8" Lc = 119.99 Tc = 60.59 R = 350	<u>CUR DATA -L-</u> Plc 17+31.98 Δc = 24°08'25.0" (RT) D = 22°38'47.6" Lc = 106.60 Tc = 54.10 R = 253	<u>CUR DATA -L-</u> Plc 19+24.54 Δc = 38°33'20.0" (LT) D = 27°01'34.7" Lc = 142.66 Tc = 74.15 R = 212	<u>CUR DATA -L-</u> Plc 20+35.60 Δc = 06°25'00.0" (LT) D = 07°32'55.9" Lc = 85.00 Tc = 42.55 R = 759	<u>CUR DATA -L-</u> Plc 22+06.98 Δc = 14°31'25.8" (LT) D = 09°10'02.4" Lc = 158.43 Tc = 79.64 R = 625
---	---	---	---	---	--	---

<u>CUR DATA -DW1-</u> Plc 10+38.86 Δc = 74°35'54.9" (LT) D = 143°14'22.0" Lc = 52.08 Tc = 30.47 R = 40	<u>CUR DATA -DW1-</u> Plc 11+34.28 Δc = 62°22'30.7" (RT) D = 143°14'22.0" Lc = 43.55 Tc = 24.21 R = 40
--	--



I, BRIAN BARWATT, PLS, CERTIFY THAT THE RIGHT OF WAY AND PERMANENT EASEMENT MONUMENTATION FOR THIS PROJECT SHOWN HEREIN WAS COMPLETED UNDER MY DIRECT AND RESPONSIBLE CHARGE FROM AN ACTUAL SURVEY MADE UNDER MY SUPERVISION; THAT ALL HORIZONTAL CLOSURES HAD A MINIMUM RATIO OF PRECISION OF 1:10,000 (CLASS A). FIELD WORK WAS PERFORMED FROM 2/20/2023 TO 4/10/2023, AND ALL COORDINATES ARE BASED ON NAD83/NA 2011; THAT THIS SURVEY WAS PERFORMED TO MEET THE REQUIREMENTS OF 21NCAC 56.1600 AS APPLICABLE.

THIS 17TH DAY OF SEPTEMBER, 2025.

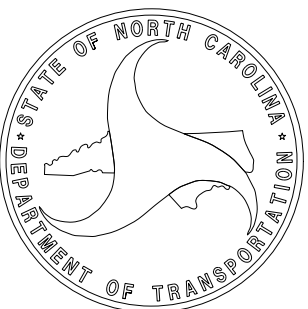
DocuSigned by:
Brian Barwatt
40350F58A8A8ACE

PROFESSIONAL LAND SURVEYOR L-4727

HB-0030

R/W 04

NORTH CAROLINA
DEPARTMENT
OF TRANSPORTATION



PROFESSIONAL LAND
SURVEYOR

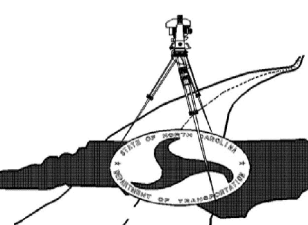


DOCUMENT NOT CONSIDERED
FINAL UNLESS ALL SIGNATURES
ARE COMPLETED

2024 STANDARD
SPECIFICATIONS

TIP PROJECT: HB-0030
County: Macon

PREPARED FOR



LOCATION AND SURVEYS UNIT

PREPARED BY
LOCATION AND SURVEYS
DIVISION 14
122 RONNIE LANE
SYLVA, NC 28779

NOTES:

1. IF FURTHER INFORMATION REGARDING PROJECT CONTROL IS NEEDED, PLEASE CONTACT THE LOCATION AND SURVEYS UNIT.